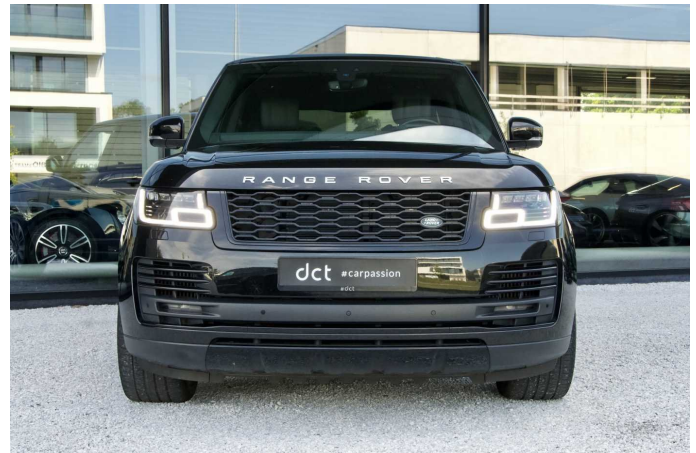
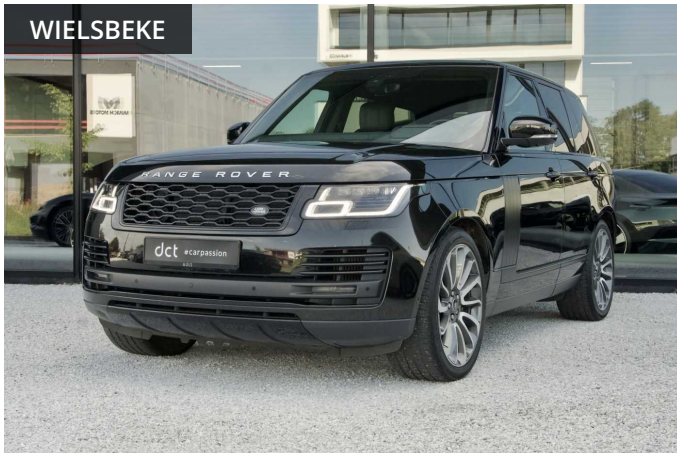


LAND ROVER RANGE ROVER

4.4 V8 VOGUE LICHTE VRACHT PANORAMATOWBAR ACC

€ 82.900



Bezoek deze wagen bij DCT Wielsbeke



WIELSBEKE

Ooigemstraat 6

T +32 56 44 33 33

wielsbeke@dct.be

BTW BE 0479 929 967

SPECIFICATIES

Merk	Land Rover
Model	Range Rover
Eerste inschrijving	03/2020
Kilometerstand	71.802 km
Brandstof	Diesel
Vermogen (kW/Pk)	250 kW / 339 Pk
Cylinder capaciteit	4367 cc
CO2 uitstoot	244 g/km
Transmissie	Automaat (8)
Carrosserie	Terreinwagen
Kleur	Zwart metaalkleur
BTW aftrekbaar	Ja
Prijs	€ 82.900

Wens je deze wagen in een andere kleur of configuratie? Laat het ons weten en we gaan op zoek naar de juiste match!

HIGHLIGHTS

- Land Rover Range Rover SDV8 Lichte Vracht Utilitaire - TOPCONFIGURATION
-
- BLACK - BLACK
-
- 22" wheels
- 360° Parking aid
- ACC + Stop/GO
- Air cleaner-dry/single stage
- All terrain progress control
- Ambient lighting-configurable
- Apple Carplay
- Auto terrain response
- BBU with tilt sensor
- Body colored painted roof
- Brake Calipers - Grey anodised
- Branded surround sound system
- Cabin Air ionisation
- Console-W/armrest + Cooler box
- Daytime running lamps
- Digital audio broadcast
- Door handles body color
- Door map pocket
- DR Armrest premium leather
- Dual note electric horn
- Electronic air suspension W/ARC
- Exteriro mirror finish body colour
- Forward facing camera
- Front fog lamps
- Headlining Morzine
- Heated steering wheel
- Locking wheel lug nut
- Soft door close
- Standard brake pads
- Tail lamp - Dark
- Towbar - electric deployable
- Windsor leather perforated
- Auto high beam assist
- Breakdown warning sign
- Charging equipment
- Foot pedal - metallic finish
- Fuel filler door lock
- Head up Display
- Heated front windscreen
- Heated/cooled seats front
- Heated seats rear
- Intelligent emergency braking
- Keyless Entry
- LDW + Lane assist
- Paddle shift - black
- Privacy glass
- Roof sliding panoramic
- Tyre pressure monitoring system
- Voice activated controls
- Lichte vracht - Utilitaire
- VAT Refundable